

More information.

For current prices and detailed information, please visit: www.lady-comp.de



DEVELOPMENT, MANUFACTURING, WORLDWIDE DISTRIBUTION

VE Valley Electronics GmbH
Breite 2, 82418 Murnau/Germany
Tel +49 (0) 8841 48928-0
Fax +49 (0) 8841 48928-24

info@lady-comp.de
www.lady-comp.de
info@valley-electronics.com
www.valley-electronics.com



Rev. Nr. 02/14

Natural family planning.
Lady-Comp baby – the intelligent fertility computer.



LADY-COMP® baby

Lady-Comp baby – For all women trying to conceive.

Babies can be planned. Lady-Comp baby helps make families.

The program.

Lady-Comp baby determines your fertile days based on your morning temperature and will alert you on your most fertile days: on the day you ovulate – and the five days before ovulation. It can also do much more: it uses statistical methods to detect various causes of reduced fertility and thus helps to solve individual problems of conception.



It's so easy!

1 Take your temperature under your tongue every morning.

2 Enter menstruation on the days you have them.

3 Lady-Comp baby evaluates your data and calculates your fertility status for the next 24 hours:

- = Infertile
- = Learning phase
- = Fertile
- ☀ = Ovulation

Reliability is most important.

Lady-Comp baby's daily fertility display has a Pearl-Index of 0.7, meaning it is 99.3% accurate. The fertility computer is the uncontested leader in terms of accuracy, ease of use and safety.

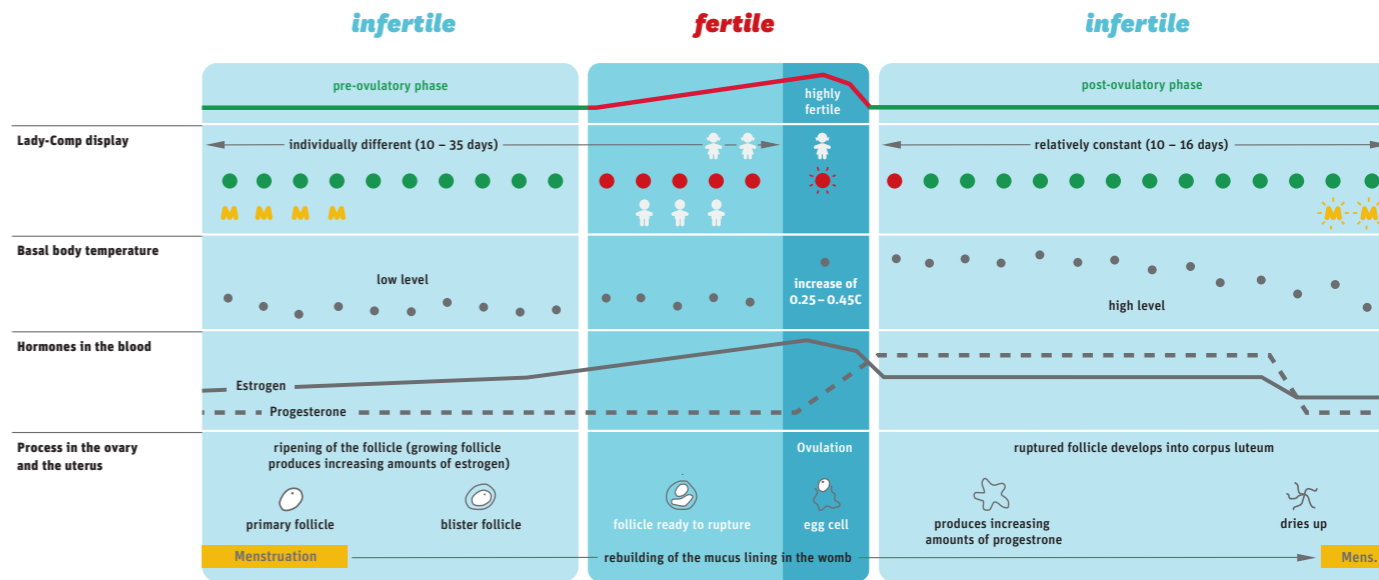
Lady-Comp baby does so much more:

- Forecasts your most fertile days.
- Contains an integrated pregnancy test.
- Calculates the expected delivery date of your baby.

With the fertility calendar and planning statistics you obtain valuable information to help you plan your child.

- Past and future fertility status.
- Cycle length and length of luteal phase.
- Temperature curve and temperature rise after ovulation.
- Ovulation fluctuation in days.
- Ovulation prognosis and gender prediction.
- Shows hormonal imbalances.
- Baby planning statistics.
- View your cycle details on your Lady-Comp baby or PC.

Medical basics.



Biological facts:

- Every woman ovulates only once each cycle.
- If on the rare occasion two or more ovulations occur, they will occur within 24 hours.
- After ovulation, the egg can be fertilized for a maximum of 18 hours.
- Sperm can remain active and fertile in the woman's body for a maximum of 5 days.

That means:

Just on six days during each cycle pregnancy can occur, five days before ovulation and on the day of ovulation.

Lady-Comp baby knows:

Lady-Comp baby uses these biological facts and your individual cycle to reliably indicate when you are fertile or not.